





# **EU TECHNICAL MEASURES APPLICABLE IN THE BLACK SEA**

05<sup>th</sup> DECEMBER 2019



# Regulation 1343/2011, certain provisions for fishing in GFCM area.

This Regulation applies to **all commercial fishing and aquaculture activities**, as well as to recreational fishing activities where specifically provided for in this Regulation, **conducted by Union fishing vessels and nationals of Member States in the GFCM Agreement area.**

## **Article 14a. Closure period during the spawning season of turbot in the Black Sea**

1. Within the period from April to June every year, each Member State concerned (BGR +ROU) shall establish a closure period of at least two months in the Black Sea. (SG)
2. Member States may designate additional spatial/temporal restrictions in which fishing activities may be banned or restricted in order to protect aggregation areas of juveniles of turbot.



# Regulation 1343/2011, certain provisions for fishing in GFCM area.

## Fishing gear

### Article 15. Minimum mesh size in the Black Sea

1. The minimum mesh size for **nets used for trawling activities exploiting demersal stocks** in the Black Sea shall be a **square-meshed net of 40 mm at the cod-end or**, at the duly justified request of the ship-owner, by a **diamond meshed net of 50 mm**.

### Article 15a. Use of trawl nets and gill-nets fisheries in the Black Sea

1. The use of **trawl nets** shall be **prohibited**: \*\*\*\*
  - (a) **within three nautical miles off the coast, provided that the 50 metre isobath is not reached**; or
  - (b) **within the 50 metre isobath where the depth of 50 metres is reached at a shorter distance from the coast**.

# Regulation 1343/2011, certain provisions for fishing in GFCM area.

5. From 1 January 2015, the **monofilament or twines diameter of bottom-set gillnets shall not exceed 0,5 mm.**



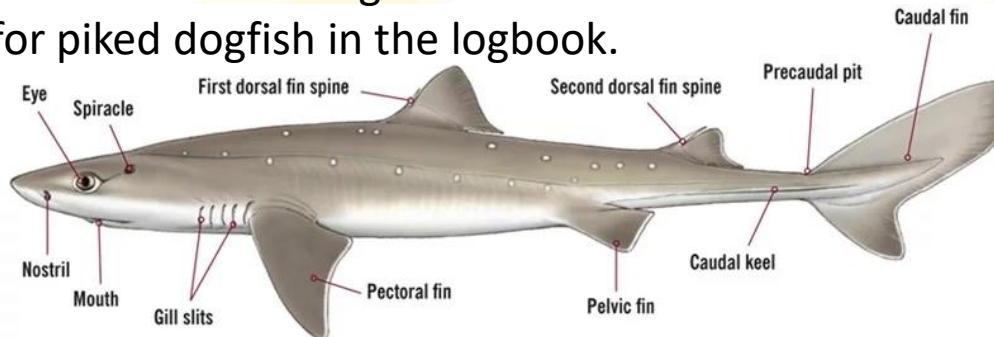
# Regulation 1343/2011, certain provisions for fishing in GFCM area.

## Article 16. Use of towed dredges and trawl nets fisheries

The use of towed dredges and trawl nets fisheries at depths beyond **1 000 m** shall be prohibited.

## Article 16da. Minimum conservation reference size for Black Sea piked dogfish

Specimens of **piked dogfish in the Black Sea smaller than 90 cm** shall not be retained on board, transhipped, landed, stored, sold nor displayed or offered for sale. When accidentally caught, such specimens of piked dogfish shall be promptly released unharmed and alive, to the extent possible. Masters of fishing vessels shall record incidental taking, release and/or discarding events for piked dogfish in the logbook.





# Commission Delegated Regulation 2017/87 discard plan for turbot in BLK

## Article 3 Survivability exemption

The **exemption from the landing obligation** pursuant to Article 15(4)(b) of Regulation (EU) No 1380/2013 for species for which scientific evidence demonstrates **high survival rates** shall apply **in 2017 to turbot** (*Psetta maxima*) caught with bottom-set gillnets (GNS) in the Black Sea.

The Member States concerned shall determine the vessels subject to the landing obligation for the fisheries of turbot (*Psetta maxima*) caught with bottom-set gillnets (GNS).

# Regulation 2018/2058 TACs and quotas

## BLK 2019

### ANNEX

The tables in this Annex set out TACs and quotas in tonnes live weight and, where appropriate, conditions functionally linked thereto.

<b>Species:</b>	Sprat <i>Sprattus sprattus</i>	<b>Zone:</b>	Union waters in the Black Sea (SPR/F3742C)
-----------------	-----------------------------------	--------------	---

Bulgaria	8 032,50
Romania	3 442,50
Union	11 475
TAC	Not relevant/Not agreed

Analytical quota  
Article 3 of Regulation (EC)  
No 847/96 shall not apply.  
Article 4 of Regulation (EC)  
No 847/96 shall not apply.

<b>Species:</b>	Turbot <i>Psetta maxima</i>	<b>Zone:</b>	Union waters in the Black Sea (TUR/F3742C)
-----------------	--------------------------------	--------------	---

Bulgaria	57
Romania	57
Union	114 (*)
TAC	644

Analytical TAC  
Article 3 of Regulation (EC)  
No 847/96 shall not apply.  
Article 4 of Regulation (EC)  
No 847/96 shall not apply.

(\*) No fishing activity, including transhipment, taking on board, landing and first sale shall be permitted from 15 April to 15 June 2019.

# Regulation 2019/1241, Technical measures

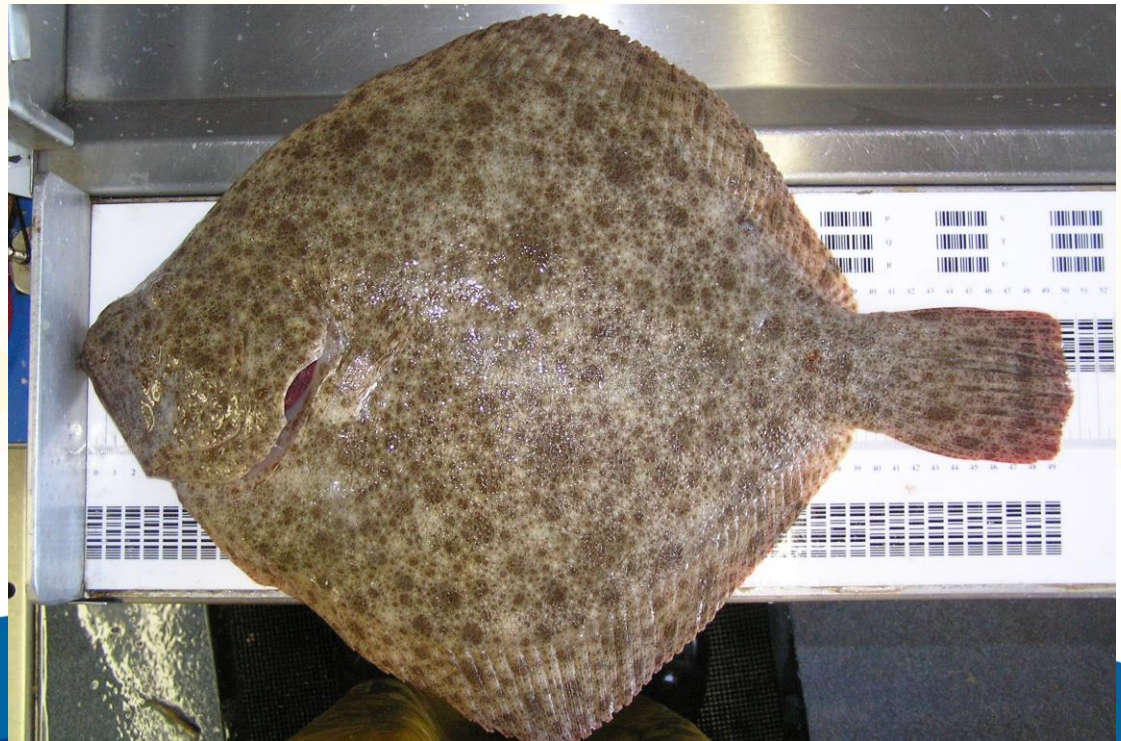
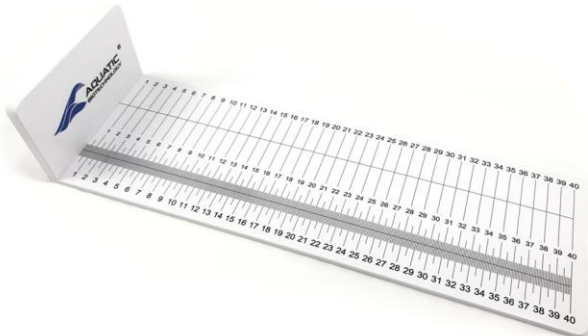
## ANNEX X BLACK SEA

### PART A

### Minimum conservation reference sizes (MCRS)

**Turbot (*Psetta maxima*) 45 cm**

The size of any fish shall be measured from the tip of the snout to the end of the tail fin.



# Regulation 2019/1241 Technical measures

## PART B

### Mesh sizes for towed gear for demersal stocks

At least **40 mm**. Whole area.

A diamond mesh codend of **50 mm** ( <sup>1</sup> ) may be used as an alternative to the 40 mm square mesh cod end at the duly justified request of the vessel owner

( 1 ) Only one type of net (either 40 mm square mesh or 50 mm diamond mesh) is allowed to be kept on board or deployed.



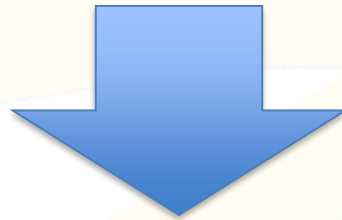


# Regulation 2019/1241 Technical measures

## **Mesh sizes for static nets shall**

At least **400 mm**. Whole area. Bottom set gillnets when used to catch turbot.

Restrictions on the use of trawls and dredges. The use of trawls or dredges at depths beyond 1000 m shall be prohibited.



**COMMISSION REGULATION (EC) No 517/2008  
For determination of the mesh size**



# COMMISSION REGULATION (EC) No 517/2008

## For determination of the mesh size and assessing the thickness of twine of fishing nets

**Main definitions to be taken into consideration:**

**-Passive/Active gear:** as regards if fishing operation requires or not an active movement of the gear

Gill-net for Turbot: ACTIVE or PASSIVE??  
OTM for sprat: ACTIVE or PASSIVE??  
TBB for Rapana: ACTIVE or PASSIVE??

**-Diamond mesh** means a mesh composed of four bars of the same length where the two diagonals of the mesh are perpendicular and one diagonal is parallel to the longitudinal axis of the net.

**-Square mesh** means a quadrilateral mesh composed of two sets of parallel bars of the same length, where one set is parallel to, and the other is at right angles to the longitudinal axis of the net.

## DETERMINATION OF MESH SIZE. Before starting the inspector shall:

-**Select the appropriate size of jaw** for the meshes to be measured:

small jaws range from 10 to 70mm

normal jaws range from 40 to 200mm

extended jaws range from 140 to 300mm\*\*\*\*



-Ensure that **jaws are clean**

-Check that the gauge completes **the self-test** satisfactorily (OMEGA makes this test once switched on).

-Select the **measuring force** to be applied as follows:

**for active gear:**

20 N for mesh sizes < 35 mm,

**50 N for mesh sizes  $\geq$  35 mm and < 55 mm,**

125 N for mesh sizes  $\geq$  55 mm;

**for passive gear:**

**10 N for all mesh sizes;**

-Verify the jaw type setting. The **default setting is 'Normal'**. If small or large jaws are used, the inspector shall enter the menu and change the jaw type setting accordingly.

Once completed previous steps, we are ready to start for measuring, with a kind reminder (Meshes shall be measured only when **wet and unfrozen**).

**Selection of meshes in active gear**: The inspector shall select a series of **20** consecutive\*\*meshes\* from the net, chosen in the following direction:

-**for diamond and square meshes**, in the direction of the longitudinal axis of the net.

\*Meshes less than three meshes from the selvedge, lacings, ropes or cod line shall not be measured, including broken, repaired meshes and meshes with attachments fixed.

\*\*The meshes to be measured need not to be consecutive if the application of paragraph above prevents it.





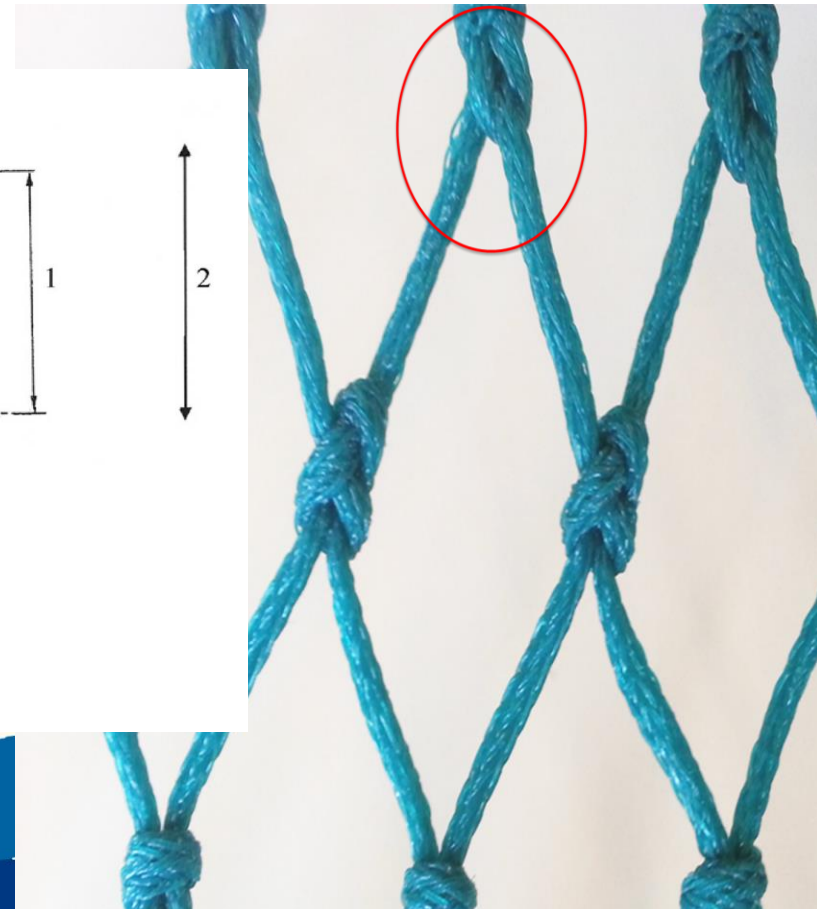
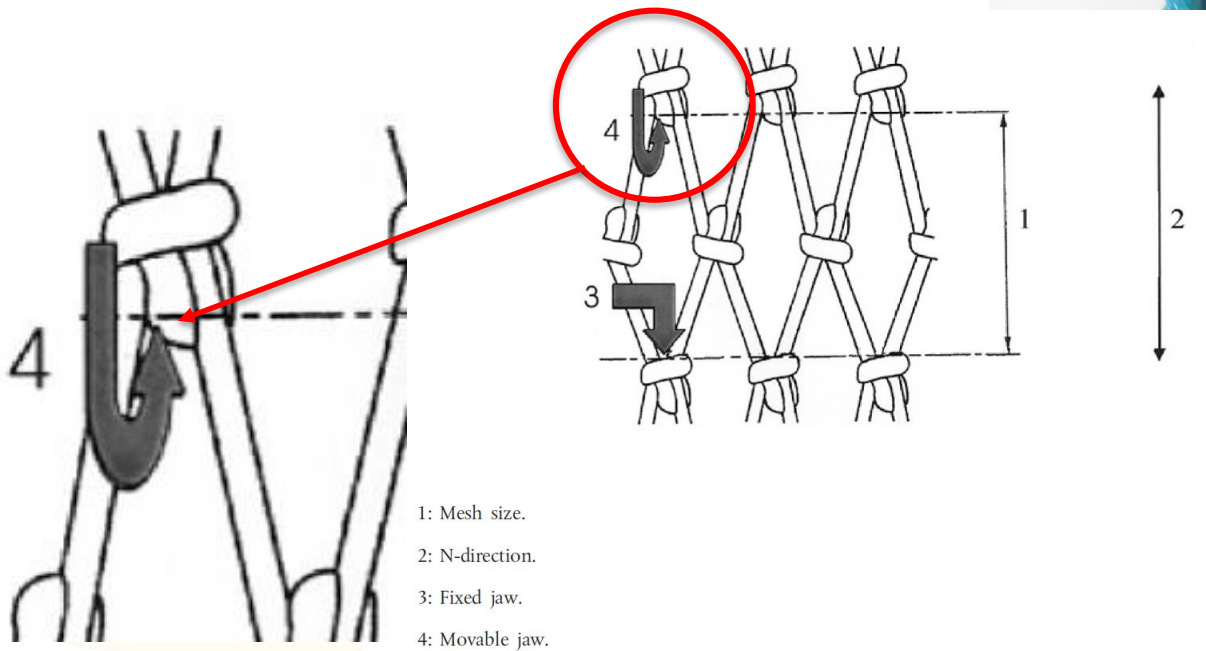
**Selection of meshes in passive gear:** The inspector shall select **20** meshes from the fishing net. (Not needed to be consecutive).

In the case of different mesh sizes in the fishing net, the meshes shall be selected from the part of the fishing net having the **smallest meshes**. (i.e. trammel nets)

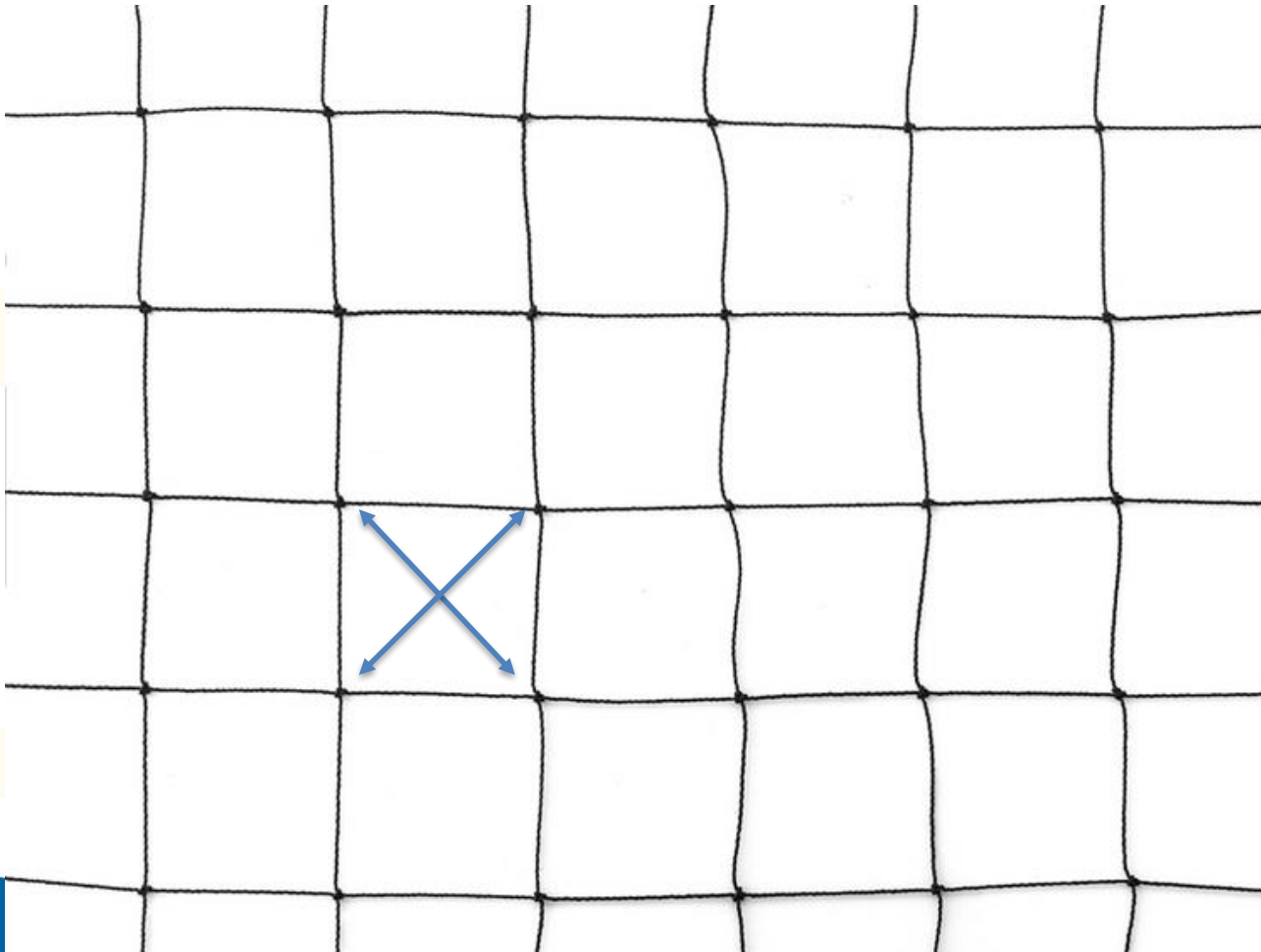
When selecting meshes the following meshes shall not be included:

- meshes at the top, bottom or side of a net selvedge;
- meshes within three meshes of lacings and ropes;
- meshes that have been broken or have been repaired.

**Finally, once meshes been selected by the inspector/s, it is time for measuring**  
-In case of **diamond meshes**, the netting shall be stretched in the N-direction of the meshes.



-In case of a **square mesh panel**, the netting shall be stretched first in one diagonal direction and then in the other diagonal direction of the mesh.



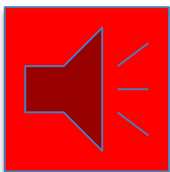
## Measurement of the size of each selected mesh

The size of each mesh shall be the distance between the outside edges of the jaws of the gauge at the point where the movable jaw is stopped. Where there is a difference in measurement between the 2 diagonals of an individual square mesh, then the larger diagonal shall be used and its taken automatically by the OMEGA.

## Determination of the mesh size of the net

The mesh size of the net shall be determined as the average value, **displayed by the gauge**, of the series of 20 selected meshes.

Technical specifications of the mesh gauge: have a measurement **precision of 1 mm**





## What happens if the Captain refuses or disputes the result?

-**Other 20 meshes** shall be selected and measured in **another part** of the fishing net by the inspector.

-The mesh size shall then be redetermined as the **mean value**, displayed by the gauge, of all **40 meshes measured**. The displayed result of the gauge shall be **final**. (**Again we need to take into account here the OMEGA tolerance of 1 mm**).



# TURBOT Gill-net case



-OMEGA gauge is not appropriate for determining mesh size of Turbot gillnets.

-Extended jaws range up 300mm



Minimum size TUR gillnet 400 mm.

-Measuring force to be applied passive gear: 10 Nw (Equivalent 1 kg).

-Square meshes panels, the netting shall be stretched first in one diagonal direction and then in the other diagonal direction of the mesh, and then apply the established procedure.

## Beam trawlers and OTMs for SPRAT

To take into consideration regulation 3440/84 concerning attachment of devices to trawls and similar nets.



# Thank you for your attention

**EFCA BLACK SEA TEAM**

Unit 3. Coast Guard Cooperation and International Projects